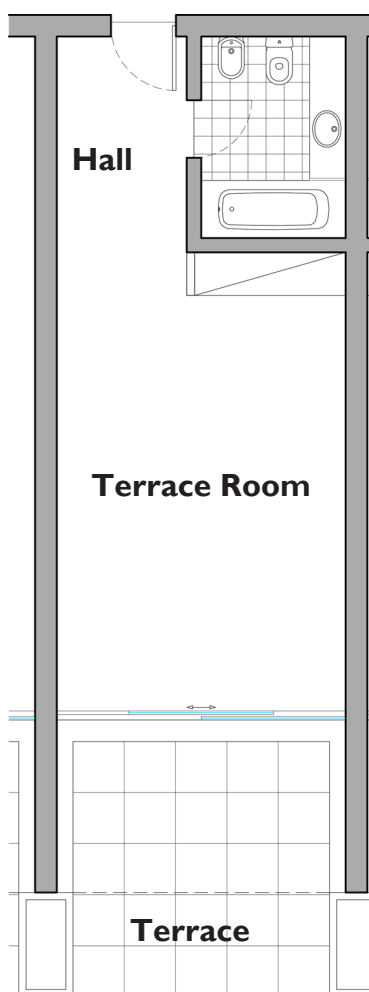


Terrace Room



Area: 37,5 m²

Beds: 200X200 (twin beds adaptable to double bed)

Description: Situated within the main building and surrounded by private gardens. The architecture draws on the austere beauty of the unspoiled western Algarve, a design signature that's effortlessly carried through to the living spaces. Each en-suite room has its own private wood deck terrace and an area of lawn where guests can lounge and soak in the sun and memorable sea views.

Decoration: The interiors of natural materials like timber, cork and wicker to furnish the rooms lend the accommodation a minimalist, organic quality that is as appealing as it is innovative. Likewise, the muted pastel tones used to decorate the interior create a wonderfully mellow atmosphere that is easy on the mind, and on the soul.

Facilities: Voya amenities (75ml bath gel+shampoo+body milk+soap), 1 Tub with Shower, hairdryer on, heated towel rail, magnifying mirror, sewing kit, shower bonet and nail file in the bathroom, robe and slippers, Ipod docking station, satellite TV, Pay TV, video on demand, safe, telephone, internet Wi-Fi complimentary, mini bar (waters and soft drinks are complimentary but others items have a cost), Nespress coffee machine and tabs (2,5€ each), tea facilities, twice daily cleaning service, turndown service. At terrace 2 chairs + 2 sunbeds to lounge (extra beds not available)