

A wide-angle photograph of a rooftop terrace at sunset. The terrace is furnished with white lounge chairs, a sofa, and a small tree. The sea is visible in the background, with the sun low on the horizon, creating a bright reflection on the water. The sky is a mix of blue and orange. The terrace has a white railing and a small white dome structure.

## ACCOMMODATION

All rooms and suites offer 180 degree unobstructed views of the Caldera and the famous Santorini sunset. In addition to the hotel's exclusive private Villa, the hotel's accommodation includes a range of remarkable Luxury Suites, including our Grace, VIP, Superior, and Honeymoon Suites. There are also Junior Suites and Deluxe Rooms available, both with the option of a private plunge pool. Coming soon are two new exclusive Santorini Suites with private infinity pools.

*Floor plans and images to follow are indicative of each room type*



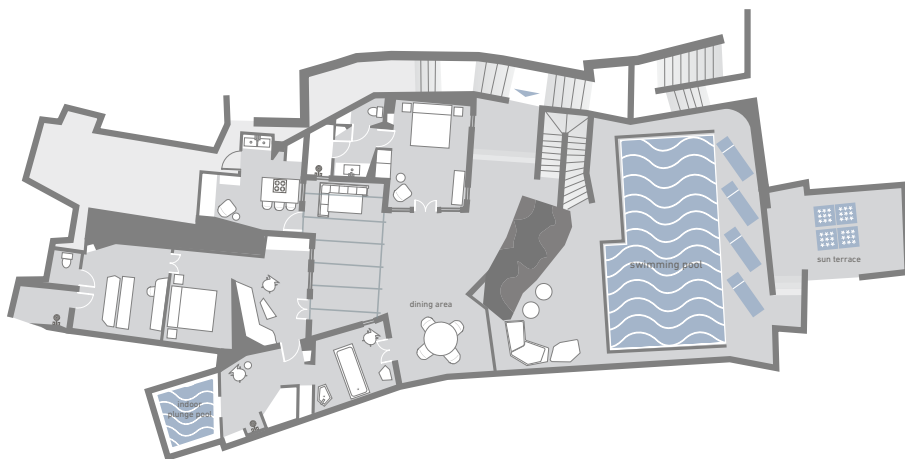


## THE VILLA

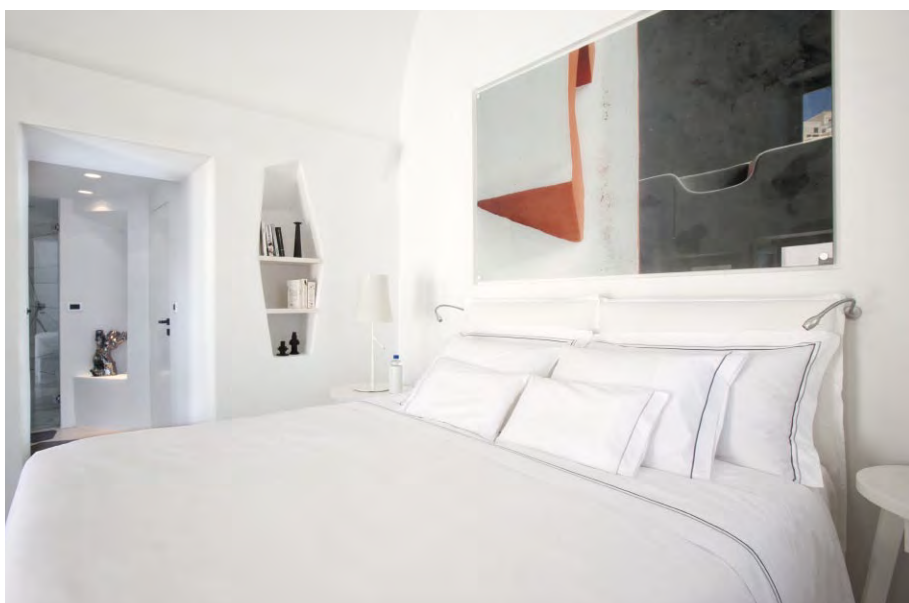
The hotel's private luxury retreat is the Villa – a self-contained 400 sq m two-bedroom suite offering residents a prestigious sanctuary. Meticulously planned, its luxurious accommodation and exclusive amenities make every stay exceptional. The Villa has its own spa with a steam bath, an indoor plunge pool, and a treatment room. From a relaxing massage to a revitalizing facial, Grace Santorini's full range of treatments can be enjoyed in absolute privacy and peace.

The Villa's open-plan kitchen is equipped with a pre-stocked refrigerator, wine & cigar bar as well as a private chef available on request. Guests may unwind with Smart-System TV and a book library. Villa technology includes secure Wi-Fi, iPad and mobile smartphones. The outside spaces, extending over 250 sq m, stage breathtaking views. Double-level seating areas and sun decks overlook the private heated swimming pool, outdoor fireplace and gazebo. With a dedicated Villa Manager available instantly at any request, the Grace attention to detail is second to none at the Villa.





Interior: 150 sq.m • Exterior: 250 sq.m  
4 adults • 1 unit





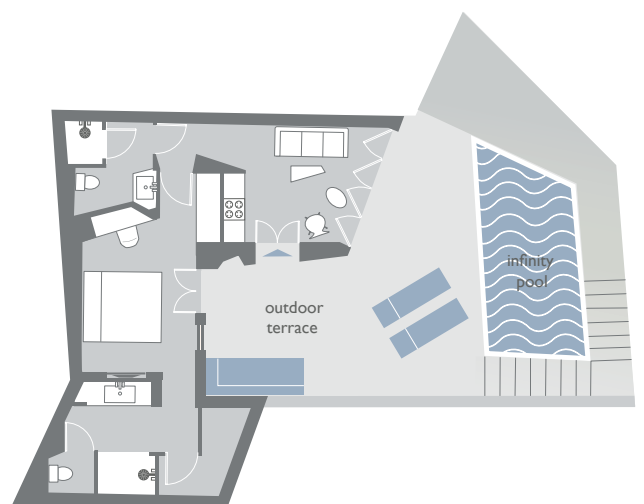


## SANTORINI SUITE

Elegant and refined, the new Santorini Suites take accommodation to a different level. Designed to perfection, these suites seamlessly blend spellbinding views, awe inspiring design and the most beautiful elements of luxury one can imagine. Each Santorini Suite opens out to an extensive terrace featuring a dining area, perfect for private celebrations or intimate dinners to excite the most selective taste buds and a spacious seating lounge ideal for basking in the sun or gazing at the stars.

The infinity-edge heated private swimming pools overlooking a 360 degree striking Caldera View are the best excuse to stay in all day – and night. Serenely minimal in design, yet amazingly exclusive, each suite offers a spacious bedroom with a king-size bed, latest indoor and outdoor audio visual equipment, an en-suite bathroom with oversized shower for two, as well as a separate comfortable living area with sofa that can be converted into a double bed.

The ultimate choice for a honeymoon to remember or a group of friends travelling together, seeking solitude and elegance combined with majestic views of the Caldera charm.



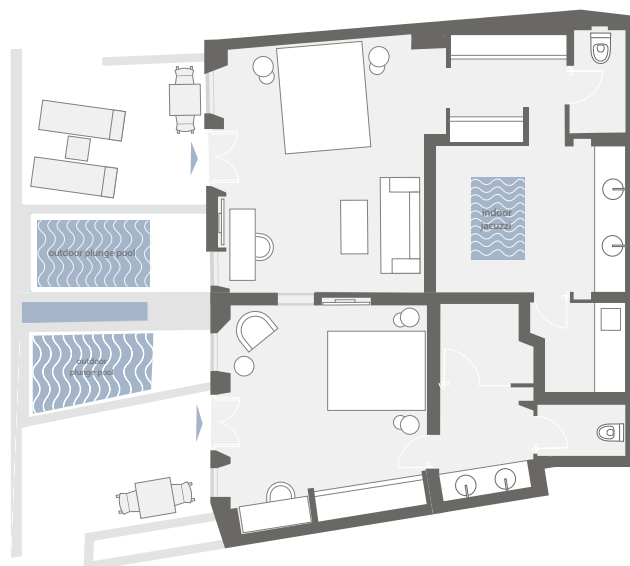
**Interior** 65 sq. m • **Exterior:** 40 sq. m  
2 adults • 2 units'



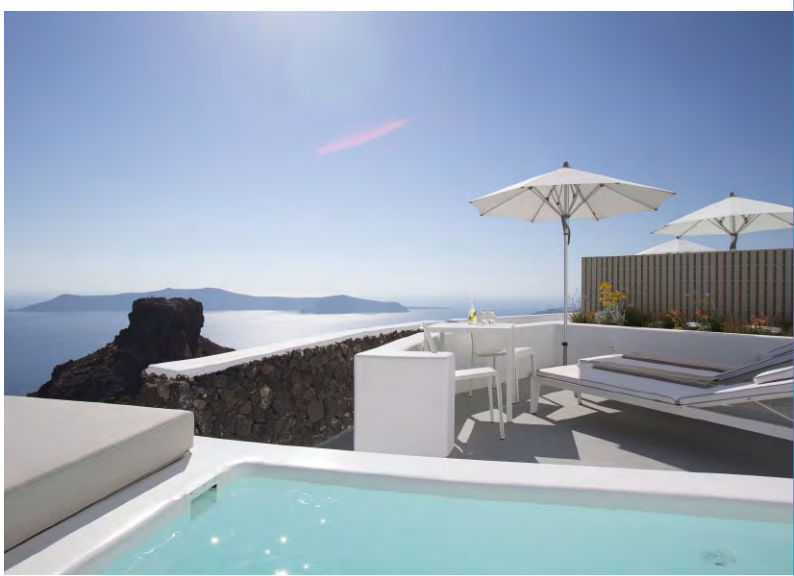
## GRACE SUITE

(connected to the Deluxe room with plunge pool)

The luxurious Grace Suite offers premier accommodation, with glorious views over the Caldera and of the sun setting on the Aegean. Its terrace features comfortable sun loungers, a seating and dining arrangement, and an alluring private heated plunge pool. The suite includes a spacious master bedroom with a king-size bed, a Smart-System TV, and a comfortable seating area. An ultra-luxurious en-suite bathroom features a steam bath and an interior heated plunge pool featuring views of the horizon. The interconnecting additional bedroom also features a king-size bed, a Smart-System TV, its own bathroom, spacious terrace, and a personal heated plunge pool.



**Interior:** 102 sq.m • **Exterior:** 54 sq.m  
4 adults • 1 unit

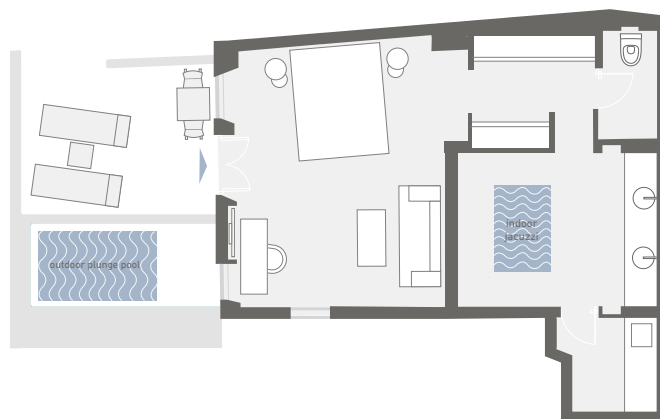






## GRACE SUITE

The luxurious Grace Suite offers premier accommodation, with glorious views over the Caldera and of the sun setting on the Aegean. Designed to perfection, these suites seamlessly blend spellbinding views, awe inspiring design and the most unique elements of luxury one can imagine. Each Grace Suite opens out to a terrace which features comfortable sun loungers, a seating arrangement, and an alluring private heated plunge pool. The suite includes a spacious bedroom with a king-size bed, a Smart-System TV, and a comfortable seating area. An ultra-luxurious en-suite bathroom features a steam bath and a separate interior heated plunge pool featuring views of the horizon.



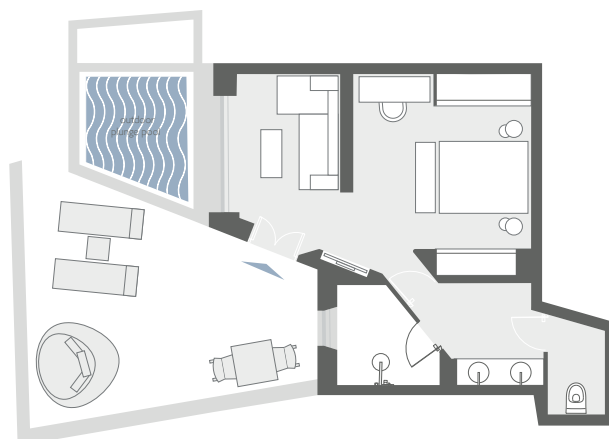
Grace Suite with plunge pool

**Interior:** 63 sq.m • **Exterior:** 33 sq.m  
2 adults • 2 units

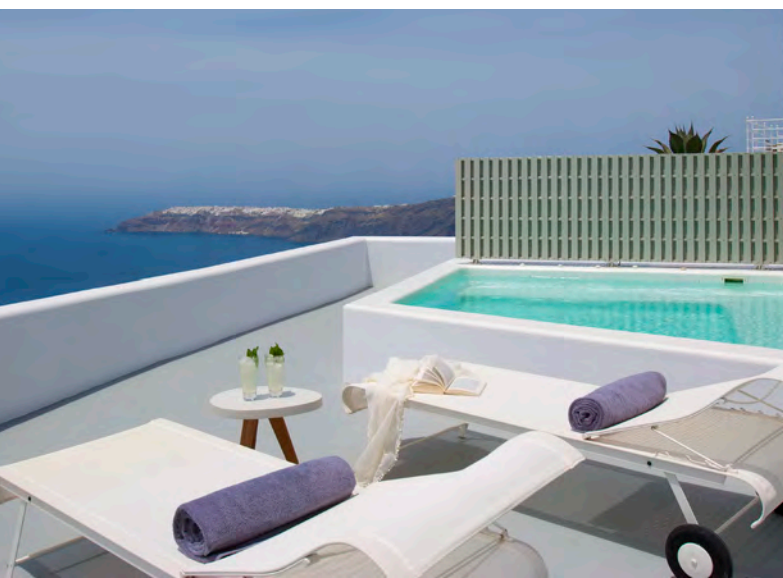


## VIP SUITE

The VIP Suite offers unobstructed views to the Caldera and Skaros Rock. It features a private entrance and has the largest terrace and personal heated plunge pool in the hotel, which includes a seating arrangement beside a double sun lounger. This suite also has an innovative and unique lava rock feature in front of a panorama window, which adds to the feel of privacy and creates wonderful light displays as the sunlight filters through. The suite's bedroom includes a king-size bed, Smart-System TV, and an en-suite bathroom that features a shower/ steam room for two.



**Interior:** 53 sq.m • **Exterior:** 68 sq.m  
2 adults • 1 unit

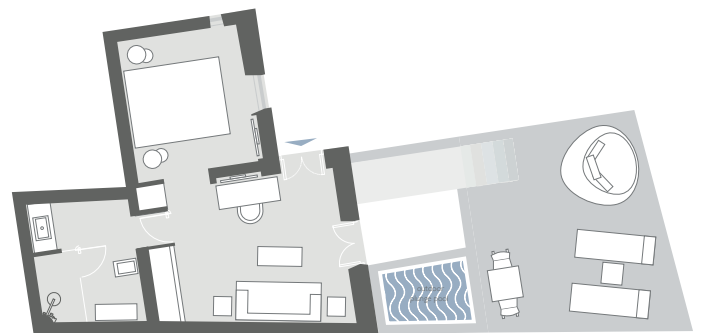




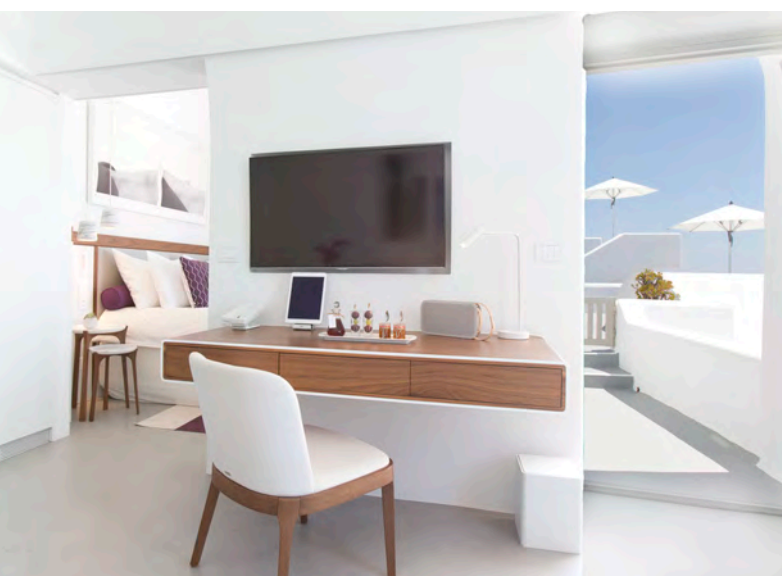


## SUPERIOR SUITE

The Superior Suite offers a generous terrace with panoramic views out over the sea, a personal heated plunge pool, sun loungers, as well as other comfortable seating and dining arrangements. A spacious bedroom features a king-size bed, Smart-System TV, and an en-suite bathroom.



**Interior:** 48 sq.m • **Exterior:** 38 sq.m  
2 adults • 2 units

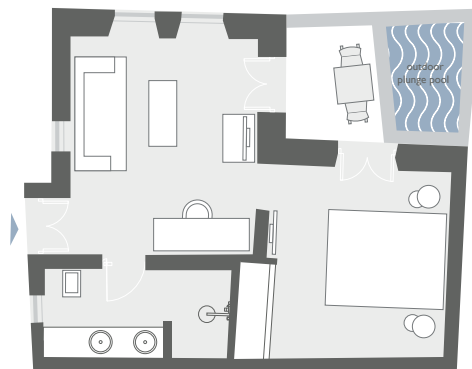






## HONEYMOON SUITE

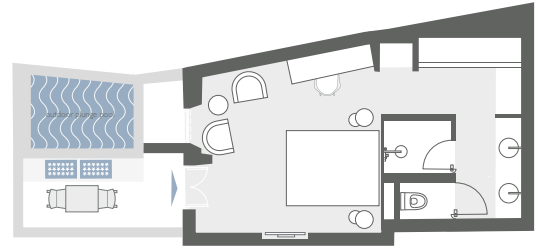
The Honeymoon Suite is a beautiful suite, enjoying views of the romantic Santorini sunsets over the Aegean Sea towards Thirasia Island and Oia. The softly furnished bedroom features a king-size bed, a comfortable lounge providing spacious seating, as well as a bathroom with a double vanity. An intimate terrace features a personal heated plunge pool and an accompanying seating arrangement.



**Interior:** 45 sq.m • **Exterior:** 15 sq.m  
2 adults • 2 units



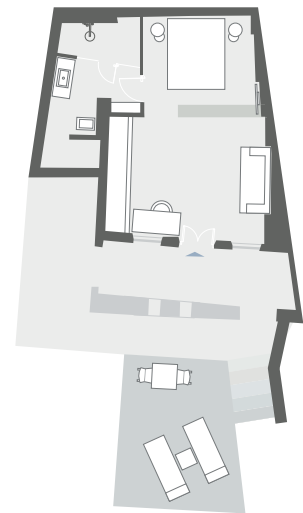
## JUNIOR SUITE WITH PLUNGE POOL



**Interior:** 45 sq.m • **Exterior:** 26 sq.m  
2 adults • 4 units

Each individually designed Junior Suite offers spacious accommodation with its own distinctive touches of style. The terrace has views of the Caldera and features a personal heated plunge pool, complete with an outdoor seating arrangement. Inside the Suite, there is a king-size bed, open-plan living area and a spacious bathroom with an oversized shower.

## JUNIOR SUITE

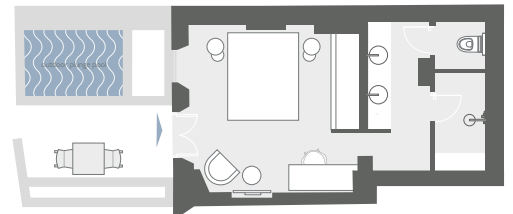


**Interior:** 45 sq.m • **Exterior:** 24 sq.m  
2 adults • 1 unit

The Junior Suite offers spacious accommodation with its own distinctive touches of style. Inside the Suite, there is a king-size bed, a spacious bathroom with shower, and a large open-plan living area. The suite leads out to a terrace that features a double sun lounger and views of the Caldera.



## DELUXE ROOM with PLUNGE POOL

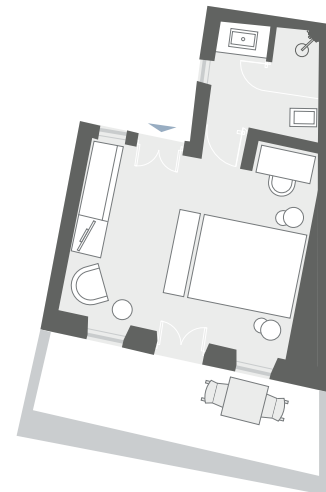
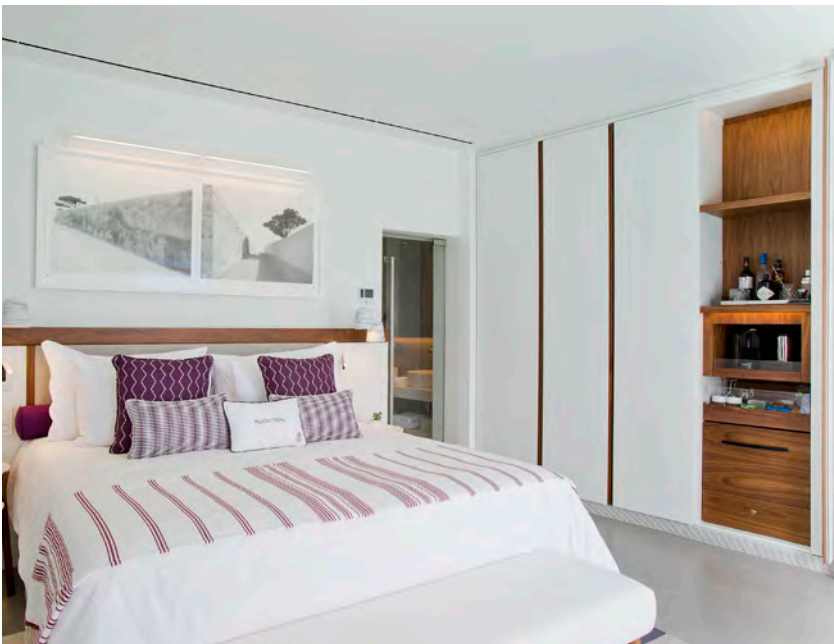


**Interior:** 34 sq.m • **Exterior:** 20 sq.m  
2 adults • 7 units

The Deluxe room with plunge pool has a king-size bed, a Smart-System TV, and an en-suite bathroom with shower. The terrace features a personal heated plunge pool and a seating arrangement to enjoy views of the Caldera, Skaros and the Aegean sunsets.

---

## DELUXE ROOM



**Interior:** 32 sq.m • **Exterior:** 13 sq.m  
2 adults • 1 unit

The Deluxe room features a king-size bed, a Smart-System TV, an en-suite bathroom with shower, sofa and an abundance of natural light. Its balcony features an outdoor seating arrangement and offers breathtaking sunset and sea views.